

AUTOMATION

**deceler**<sup>®</sup>

Cobot | AMR | Vision | Vacuum  
Safety | Rotary Indexer

[www.deceler.in](http://www.deceler.in)

# About Deceler

DECCELER Smart Automation empowers you to create more adaptive, efficient, and sustainable manufacturing solutions.

Deceler is a leader in industrial automation, dedicated to revolutionizing manufacturing processes with state-of-the-art solutions in factory automation, safety systems, and collaborative robotics. Our expertise enhances efficiency and safety across industries through advanced automation technologies and intelligent robotics, seamlessly integrating into diverse industrial environments. We are committed to delivering reliable, high-performance systems that address the evolving demands of modern industry.

## Why choose Deceler?

Founded in  
**2013**

Head Office in  
**Chennai**

Strong team of  
**30 Professionals**

Branch Office at  
**Pune**

11 years in  
**Automation**

Demo Centre at  
**Chennai & Pune**

Pan India  
**Network**

Committed to Compliance  
**Best Practices**

2400Sq.ft dedicated  
**Warehouse**

Partnered with  
**13 Global Brands**

100+ Satisfied  
**Clients**

Connects with  
**Industry 4.0**





# Deceler Automation

# Our Product Range



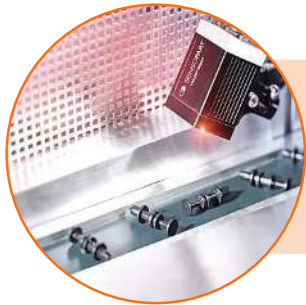
## Cobot

- Pick & Place
- Palletizing
- Glue Dispensing
- Machine Tending
- Vision
- Assembly & Screwing
- Paint Spraying
- Powder Coating & Etc.,



## AMR

- Tugging
- Transportation
- Lifting
- Intra Logistics & Warehousing



## Vision

- Detection
- Distance
- Inspection
- Positioning
- Classification



## Vacuum

- Lifter
- End Arm Tool



## Safety

- Fencing
- Interlocks

## Cobot

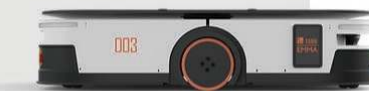
Collaborative Robots

- 3kg 5kg
- 7kg 10kg
- 12kg 16kg
- 20kg



## Mobile Robot

AMR  
FORK LIFT



## Vision

- Vision Camera
- Optical Sensor
- Ultrasonic Sensor
- Inductive Sensor



## Vacuum

- Vacuum Generator
- Vacuum Cups
- Vacuum Gripper
- Special Gripper
- Vacuum Blower
- Vacuum Lifter



## Vacuum Lifter

End Effector EOAT



## Motion Control

- Servo Indexer
- Rotary Indexer



## Safety

- Safety light curtain
- Safety Scanner
- Safety Controller
- Measurement Sensor

Industrial Safety Fencing

- Safety interlocks
- Safety Switches
- Lift Devices
- Position Switches



## Mechatronics

- Industrial Shock Absorber
- Wire Rope Isolator
- Hydraulic Buffer
- Jarret Buffer

- Safety Chuck
- Air Disc Brakes
- Power Clutches



## Gas Springs

- Push Type
- Pull
- Lockable
- Speed Regulator





INTELLIGENCE CHANGES THE WORLD  
COLLABORATION CREATES THE FUTURE



AUBO-i3	AUBO-i5/i7	AUBO-i10/i12	AUBO-i16	AUBO-i20
Payload: 3kg	Payload: 5kg/7kg	Payload: 10kg/12kg	Payload: 16kg	Payload: 20kg
Weight: 16kg	Weight: 24kg	Weight: 38.5kg/40kg	Weight: 38kg	Weight: 63kg
Repeatability: ±0.02mm	Repeatability: ±0.02mm	Repeatability: ±0.03mm	Repeatability: ±0.03mm	Repeatability: ±0.1mm
Reach: 625mm	Reach: 886.5mm/786.5mm	Reach: 1350mm/1250mm	Reach: 967.5mm	Reach: 1650mm

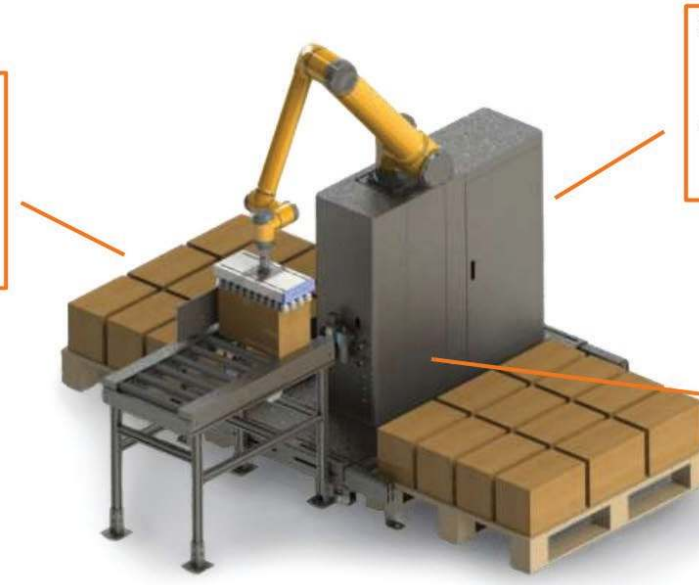


## Palletizing Station Product & Technical Overview

**S**AFETY - **S**TABILITY - **H**IGH **P**RECISION

**AUBO**  
ROBOTICS

The Palletizing Station uses specially designed software with preset routines created by AUBO Engineers to stack workpieces perfectly, every time. Taking the guess work out of end-of-line palletizing. Just follow the on screen prompts by entering your project details and specifications – no programming required, and watch as the Palletizing Station does the rest.



The included frame and chassis acts as a housing to store the cables, mechanics, and the control box out of view. The Palletizing Station is a turnkey solution that moves as one piece without the need for any internal configuration or wiring; minimizing downtime by making deployment and initial setup a breeze.

The palletizing station includes a vertical column that acts as a 7th degree of freedom that allows translation on the Z axis, improving cycle times and efficiency. Sensors are additionally placed in front of the vertical column to detect pallets and workpieces, ensuring operational accuracy and precise placement.



No Programming Experience Required



Preconfigured For Fast Deployment



Field Tested Across Applications





IPLUS MOBOT



### Product Features

## A Further Step Towards Smart Manufacturing

### Innovation in Factory Logistics with Mobile Robot

IPLUSMOBOT is a global leader in the autonomous mobile robot (AMR) field, ranking first in China's industrial logistics natural navigation AMR market share. Founded in 2016, the company is headquartered in Hangzhou, with subsidiaries in Japan and Shenzhen, China. IPLUSMOBOT specializes in providing logistics automation, digitalization, and intelligent solutions to the manufacturing industry, helping enterprises enhance configuration and operational efficiency while optimizing resource circulation. IPLUSMOBOT serves over 1,000 customers across various industries, including semiconductors, FPD, electronics, lithium batteries, photovoltaics, automobiles, aviation, home appliances, pharmaceuticals, energy, and food.

- End-to-end Autonomous Material Transporting
- High speed Human following
- Dynamic Transportation in Human vehicle-mixed
- Customization Ability
- Hybrid Navigation Technology



## EMMA-T

Trolley Tugging Application

Laser SLAM+Vision+IMU

Hybrid Navigation

≤800kg

Payload (kg)

±10mm/±1°

Position Accuracy

>8H

Runtime



# Intelligent Mobile Robots

Leading Logistics Innovation for Smart Manufacturing



**AIRBEST**

**SFG** 300mm  
Suction Cup for Galles



Size: Ø120mm~Ø400mm

- Optimum suction
- High suction force
- Seal buffer effect
- High release force

• High efficiency

**AIRBEST**

Make Smart  Go Together

**AIRBEST**

**Suction Cups for Metal Sheet in Automotive Industry**

- For oily metal sheet
- For uneven surface
- Slipping resistance
- Prevent deformation
- Good sealing



**AIRBEST**

NEW PRODUCTS  
**Vacuum Generator**

- ABP Series: Compact size, with fast blow-off
- ABO Series: with fast blow-off
- ABT Series: Mini size with high vacuum level
- AGB Series: Mechanical energy saving, 100%
- AMD Series: Large flow rate, 1000L/min




**AIRBEST**

**SOM Series**  
Oval Flat Suction Cup

- Metal Sheet Resistance
- Slipping Surface
- Oily Surface
- Curved Surface
- Long Lifetime

• Accurate direction positioned

**NEW PRODUCT**



**AIRBEST**

**AEVC Series**  
Vacuum Pump

- Small size
- High efficiency
- Low noise
- Long life

Air supply pressure: 4.5 bar  
Max vacuum level: -85kPa

- Short action cycle
- Small size, light weight, especially for high-speed working
- Could be fixed with suction cups and connector directly
- Basic vacuum pump
- Fast vacuum and blow-off



**AIRBEST**

NEW PRODUCT  
**AZQ Series**  
Compact Type Integrated Vacuum Generator

- High speed suction
- High vacuum level
- Easy to operate
- Manifold as required

Air consumption saving: 68%  
Max vacuum level: -91kPa

Volume of single unit: 43.5cm<sup>3</sup>  
Width decreasing: 26%

Easy to operate Vacuum pressure switch system operation, high sensitivity, LED display, 24VDC output, 24VDC output, 24VDC output




**AIRBEST**

**AZW Series**  
Large Flow Combined Type Vacuum Ejector

Fast vacuum pumping  
Save time 10%+

- Pharmaceuticals
- Food
- Packaging

• Air supply: 5.0 bar  
• Max. Vacuum level: -95 kPa  
• Max. Vacuum flow: 140 NL/min.



**AIRBEST**

**AGS Series**  
Vacuum Pump


Max. vacuum level: -95kPa  
Max. vacuum flow: 372NL/min



**AIRBEST**

**AGS Series**  
Vacuum Pump

Max. vacuum level: -95kPa  
Max. vacuum flow: 372NL/min




**AIRBEST**

**AGS Series Vacuum Pump Vacuum Cartridge**

Small size / energy-saving / high efficiency / good flexibility  
Simple structure / easy to maintain

- Packaging
- Logistics
- Food
- Pharmaceuticals
- Textile
- Chemical
- Automotive
- Medical
- Others



www.deceler.in

**AIRBEST**

Vacuum suction cup for Flexible packages/ Cartons/ Bag opening/ Labeling



Vacuum Components for Packaging Industry



**AIRBEST**

**AGS Series**  
Vacuum Pump

- Small size
- Energy-saving
- High efficiency
- Good flexibility

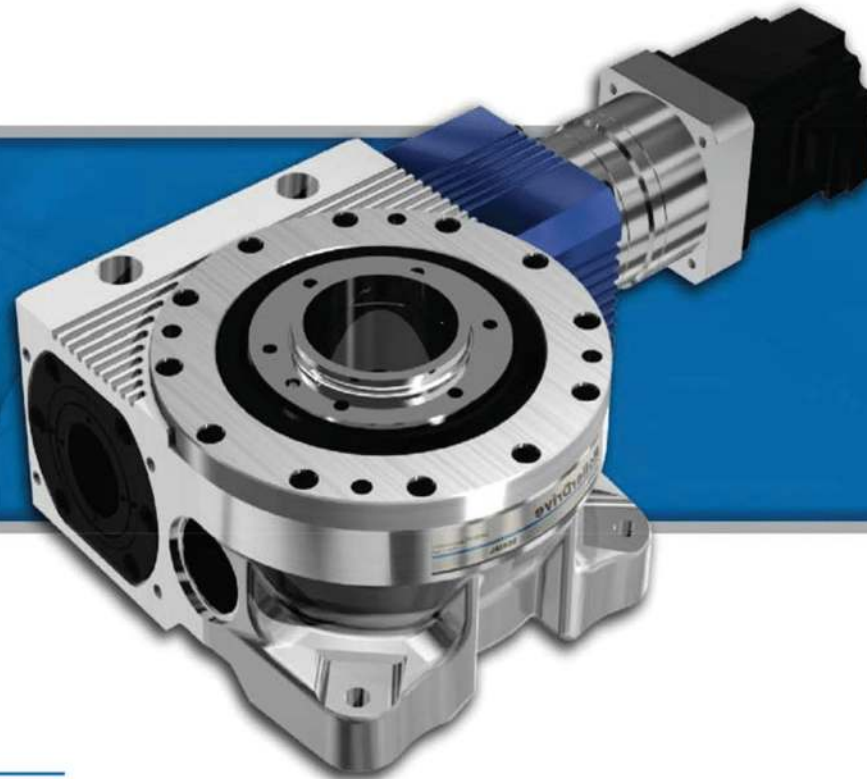
AGS series vacuum pumps with simple structure and small size, are widely used in various industries such as 3C, Packaging, Sheet metal and Logistics, mainly for distributed vacuum system.





Precision. Quality. Reliability.  
**AD Series (Alpha Drive)**

Rotary Indexing Tables



Precision. Quality. Reliability.  
**RollerDrive® RGV Series**

Servo Indexer

Overview

Design & Operation

Sankyo is the worldwide leader for indexing technology and continues to develop innovation in motion control. Sankyo's core indexing system is based upon the roller gear cam mechanism, a combination of a globoidal cam and cam followers in a precision machined turret. Output backlash is eliminated by preloading the cam follower bearings against the cam ribs.



The profile of the cam, and the rolling contact surfaces of the cam followers produce perfectly smooth, controlled motions with minimal wear. Compared to the competition, the AD Series has the largest cam followers in the industry. Larger internal components advantages are; rotate less revolutions for longer service life, more surface area for less wear, and more torque capacity for heavier loads with faster cycle times.

Features

- **Speed:** \* Up to 80 CPM, cycle on demand with a VFD controller (index period dependent)  
 \* Up to 200 CPM, cycle on demand with a servo motor drive or continuous running mode
- **Accuracy:** ±15 to ±30 arc seconds (motion & housing size dependent)
- **Load Capacity:** Large internal components can move heavier loads
- **Motion Directions:** Operates in forward or reversed directions (oscillates with VFD or servo drives)
- **Motion Options:** Over 700 indexing stops & index period combinations
- **Maintenance Free:** Sealed & totally maintenance free for life
- **Load Size:** Supports 630 to 4,050mm (14 to 160") dial plate diameters
- **Sizes:** 8 housing sizes from 70 to 450mm (2.7 to 17.7") shaft centers
- **Housing Design:** Robust cast iron housing maintains accuracy & dampens vibration
- **Output Design:** Indexing & stationary flange for dial plate mounting with hollow bore to routing supply lines
- **Input Design:** Low profile geared motor or servo motor drives are normally within the indexer housing height
- **Warranty:** 4-year warranty

Optional Safety Features

- **Emergency Stop:** When an emergency stop circuit is designed to stop the indexer mid-cycle, we recommend a fail-safe spring engaged brake motor (engaged without power) or a servo motor drive.
- **Overload Clutch:** For applications when tooling crashes could occur, we offer an output torque limiting clutch to mechanically disconnect the rotating load which protects the indexer from damage.
- **Redundant Sensors:** Dual timing sensor options can avoid human injury or machinery damage from false starts if the main stop sensor fails or a sensor wire is cut/broken.



Geared Motor Drive



Servo Motor Drive



# SAFETY AUTOMATION

## SAFETY - FENCING



Safety Light Curtains



Scanner



Safety Fencing



Safety Switch  
Safety Lock  
Rope Safety Switch  
Control Device Units  
Position Switches





# VISOR<sup>®</sup> Product Overview

## VISOR<sup>®</sup> vision sensors for factory automation

In the global automation of industrial processes, a vast number of decisions have to be made every second. Here, however, more complex links of detector results are necessary to achieve a safe and reliable good/bad decision. With our portfolio of vision solutions, we cover a wide spectrum of industrial image processing. Now even more complex applications can be evaluated with an easy-to-use vision sensor and without the need for a PC during operation. Whether detection & inspection, identification, measurement, positioning, or color detection – the VISOR<sup>®</sup> vision sensor family offers the right product for every application.

The foundation for this is a powerful smart camera in a compact and lightweight sensor housing.

### Perfectly in tune:

- A combination of sophisticated hardware and easily configurable software

### Flexibility:

- One of the most extensive vision sensor families on the market to solve your applications

### Scalability:

- Select your VISOR<sup>®</sup> to suit to your own requirements.

### Connectivity:

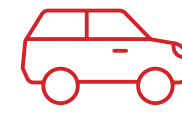
- Comprehensive protocols (e.g. PROFINET, Ethernet/IP) for seamless integration into your environment

### Ease-of-Use:

- Modern AI-based solutions solve applications more easily than ever



In many industries and applications the VISOR<sup>®</sup> can help to achieve the requirements of the automation task:



Automotive industry



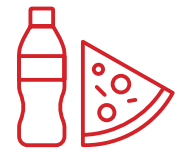
Assembly & Handling



Robotics



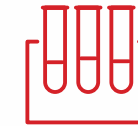
Electronics



Food & Beverages



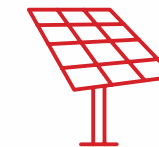
Plastics technology



Lab automation



Pharmaceuticals & Cosmetics



Solar industry



Packaging technology

The VISOR<sup>®</sup> helps to ensure quality, increase plant efficiency, reduce scrap, and reduce costs. The VISOR offers multiple ranges of integrated detectors and functionalities depending on the task:

Standard: Solves simple image processing tasks

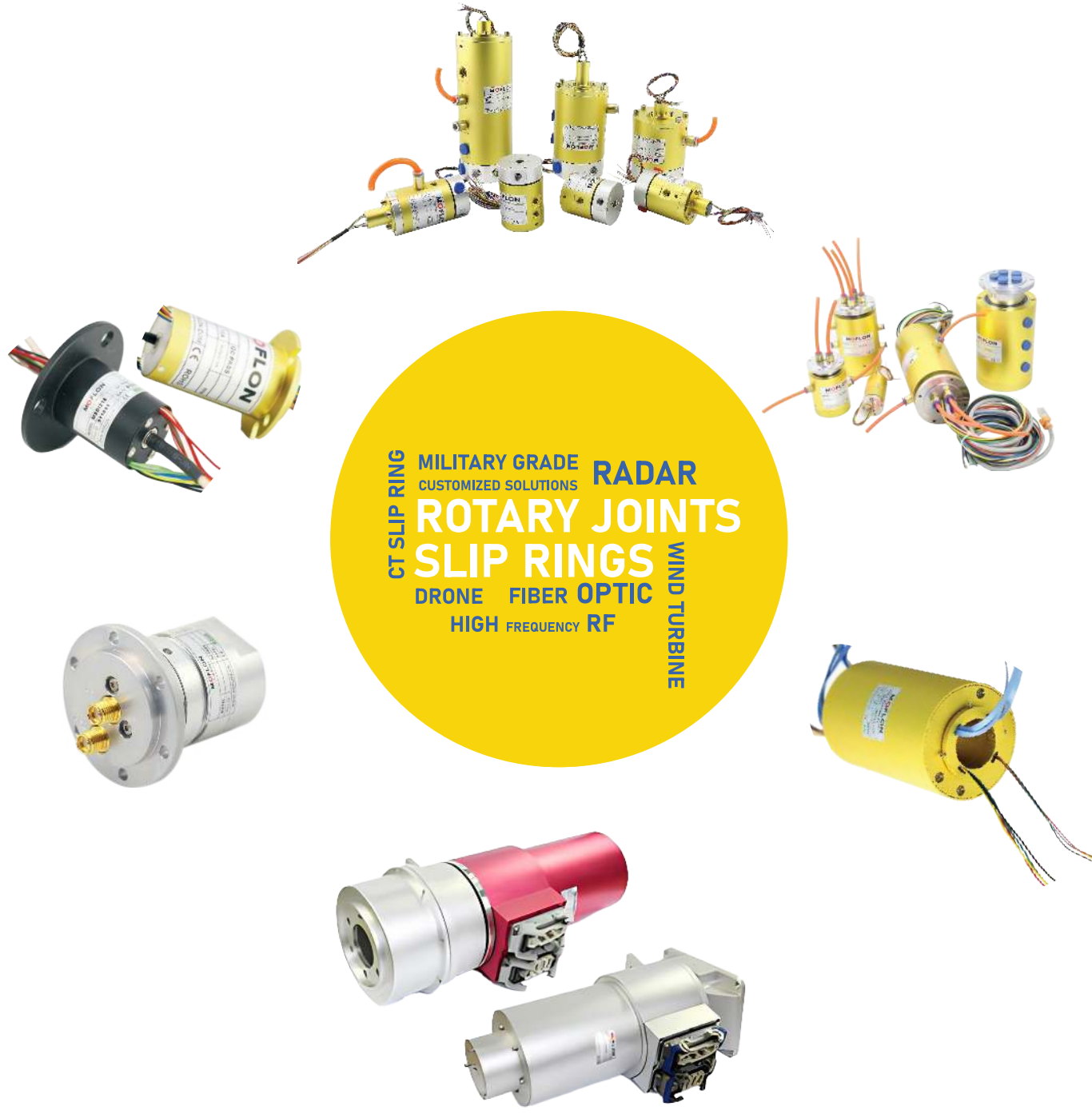
Advanced: An extended scope of functions for more challenging applications

Professional: The complete detector package suited to the most complex tasks





# Solutions in Energy Absorption and Vibration Isolation



MILITARY GRADE CUSTOMIZED SOLUTIONS  
**ROTARY JOINTS**  
**SLIP RINGS**  
HIGH FREQUENCY RF  
RADAR  
WIND TURBINE  
DRONE FIBER OPTIC



Follow us at



deceler

## Deceler Vibrotek Controls Pvt. Ltd.

### Head Office

No.38, First Floor, Arul Mary Street,  
Soosaiya Nagar, Noombal, Chennai,  
Tamilnadu - 600077, India

### Marketing Office

3rd Floor, Office No. 309 A, Bramha Sky,  
Uzuri-A, MIDC, Pimpri, Pune,  
Maharashtra - 411018, India

Chennai | Coimbatore | Delhi | Bangalore | Pune | Mumbai

 [sales@deceler.in](mailto:sales@deceler.in)

 +91 9445525883

 [www.deceler.in](http://www.deceler.in)